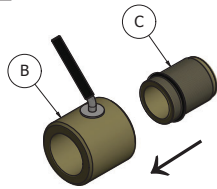


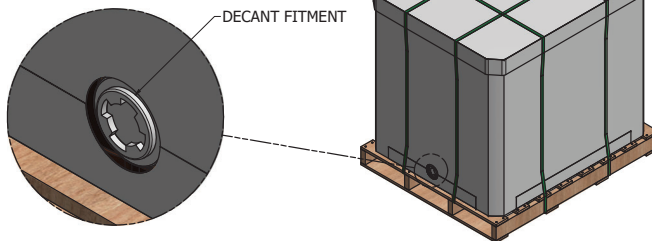
STEP 1



Ensure V-50 valve (B) is in CLOSED position to prohibit liquids from flowing. Attach shorter threaded end of Cutter Pusher Extended (C) to V-50 valve inlet as shown.

STEP 2

Prepare container by removing plastic safety seal from the liner decant fitment. Unscrew decant plug from fitment.

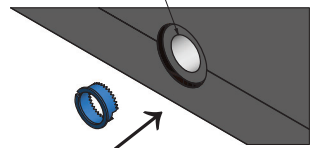


LAPOINT HYBRID LIQUID IBC V-50 FLEXI-VALVE INSTRUCTIONS

V-50 VALVE ASSEMBLY COMPONENTS LIST			
ITEM	QTY	P/N	DESCRIPTION
A	1	102236	TRI-CLAMP ADAPTER: 2" MALE X 2" BSP MALE, FDA, POLYPROPYLENE
B	1	102237	V-50 FLEXI-VALVE: 2" BSP FEMALE X 2" BSP FEMALE, FDA, POLYPROPYLENE
C	1	102259	CUTTER PUSHER EXTENDED: 2" BSP MALE X 2" BSP MALE, FDA, POLYPROPYLENE

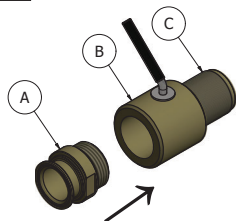
STEP 3A

DECANT FITMENT
W/ PLUG REMOVED



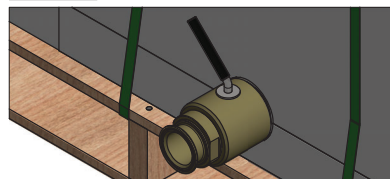
Remove blue crown cutter from decant fitment. Reinsert cutter into decant fitment with spiked edge facing liner.

STEP 4A



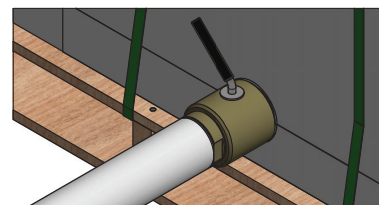
Attach Tri-Clamp Adapter (A) or sanitary fitment to outlet of V-50 valve (B). Keep valve in CLOSED position.

STEP 5A



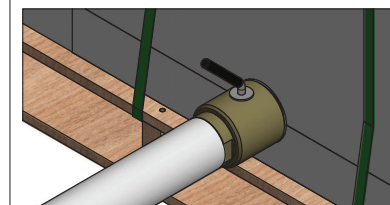
Insert V-50 valve assembly into decant fitment. Before threading, turn V-50 assembly counter-clockwise two (2) turns to ensure a straight connection. Thread valve assembly into decant fitment by turning clockwise and tighten to rubber seal.

STEP 6A



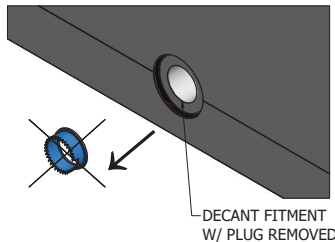
Attach any hoses or equipment needed to Tri-Clamp Adapter (A) or sanitary fitment.

STEP 7A



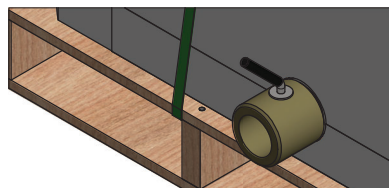
Open valve (B) to allow product flow.

STEP 3B



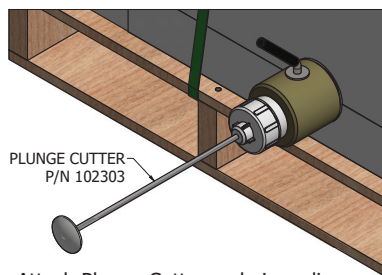
Remove enclosed blue crown cutter from decant fitment and discard.

STEP 4B



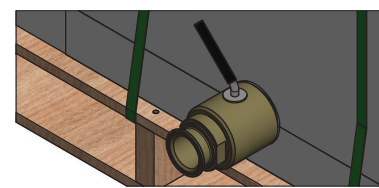
Insert V-50 valve assembly into decant fitment. Before threading, turn valve assembly counter-clockwise two (2) turns to ensure a straight connection. Thread assembly into decant fitment by turning clockwise and tighten to rubber seal. Turn valve to OPEN position.

STEP 5B



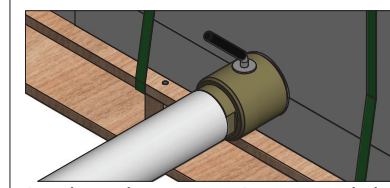
Attach Plunge Cutter and pierce liner. Retract plunger and CLOSE valve before detaching plunge cutter.

STEP 6B



Attach Tri-Clamp Adapter (A) or sanitary fitment to the V-50 valve (B) outlet.

STEP 7B



Attach any hoses or equipment needed to Tri-Clamp Adapter (A) or sanitary fitment. Open valve (B) to allow product flow.



LAPOINT PACKAGING at PackGen

160 Cascades Drive
Auburn ME 04210
(207) 784-4195

www.lapointpackaging.com
sales@packgen.com